

GETTING HELP STARTS WITH A PHONE CALL.

If you think you may be eligible for services with Circle of Care or need crisis intervention, please call or visit:

PerformCARE
877-652-7624

www.performcarenj.org

PerformCare is available
24 hours a day, 7 days a
week.

In case of emergency, call
911.

STAY IN TOUCH!

3 GARRET MOUNTAIN PLAZA
SUITE 200

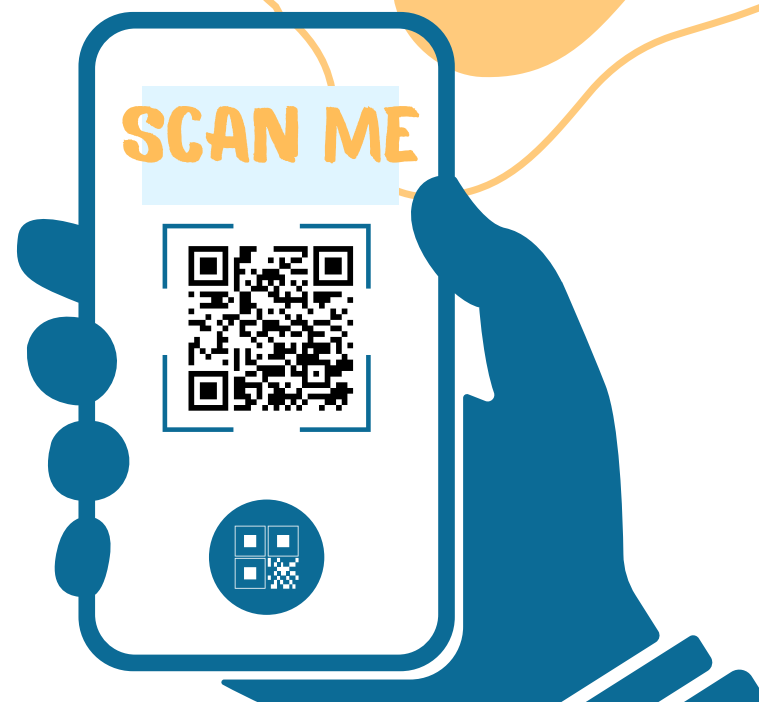
WOODLAND PARK, NJ 07424

EMAIL: INFO@COCUCMO.ORG

TEL: 973-942-4588

FAX: 973-942-4688

LEARN MORE ABOUT US,
UPCOMING EVENTS, NEWS
AND MORE!



CIRCLE OF CARE

FOR FAMILIES & CHILDREN OF PASSAIC
COUNTY, INC.



SUCCESS,
ONE FAMILY AT A TIME

OUR MISSION

The mission of Circle of Care is to provide strength-based care management services for youth and families in Passaic County experiencing emotional, behavioral, developmental and substance use challenges. Through team collaboration families build resilience to overcome barriers to their success.

We Serve Youth and Families Residing in Passaic County:

- Up to age 21
- With behavioral, emotional, developmental, substance use, and/or other challenges.
- Referred by PerformCare or one of our System Partners (DCP&P, Mobile, Juvenile Justice, etc.)
- At no cost to you

WHO WE ARE

Circle of Care is an independent non-profit organization dedicated to assisting Passaic County youth (up to age 21) and their families. Our goal is to help families attain positive outcomes for their children in their own homes and communities.

WHAT WE DO

Upon referral, your youth and family will be partnered with a Care Manager. Together, they will compose a Child Family Team (CFT), made out of "natural" (relatives, friends, neighbors) and "formal" (teachers, therapists, mentors, etc.), who will develop a plan of action.

This action plan will address all the areas of the child's life, including family interactions, safety concerns, emotional/psychological supports, educational objectives, legal issues and medical concerns.



WHO WOULD BENEFIT FROM OUR SERVICES?

- Is your child demonstrating social, emotional, and/or behavioral issues that are impacting their education, i.e. not going to school, bullying, isolating?
- Is your child angry, aggressive, lashing out, yelling, or slamming doors?
- Has your child experienced a death, divorce, relocation, or traumatic event and is not adjusting well?
- Is your child living with a developmental disability that is difficult to manage?
- Has a friend, teacher or other trusted adult expressed concerns about your child?
- Is your child leaving at night, coming home with expensive items they cannot afford, or gone for a few days at a time?
- Is your child struggling with drug or alcohol addiction?

IF YOU ANSWERED YES TO ANY OF THESE QUESTIONS OR THINK YOU MAY BE ELIGIBLE FOR SERVICES WITH CIRCLE OF CARE OR NEED CRISIS INTERVENTION, CALL PERFORMCARE

